

THE IMPORTANCE OF ADDING SPATIAL DATA TO YOUR ASSETS

Scott Overland – CTO
iSpeed Technology, LLC.



ABOUT SCOTT

- CTO at iSpeed Technology, LLC – a data visualization company on the cutting edge of GIS.
- Over 35 years of experience in telecom GIS development, spatial analysis, and system integration.
- Grew up and live in Oklahoma City, OK



WHAT IS SPATIAL DATA?

Spatial data refers to information about the physical location (coordinates) of objects on Earth.

It's like the blueprint of the world, giving us a detailed view of how everything is positioned in space.

WHAT VALUE DOES THIS ADD?

Enhanced Asset Management:

- **Accurate Inventory:** Precise GPS locations enable an accurate inventory, minimizing cost and errors.
- **Efficient Maintenance:** Exact locations help in efficient planning, reducing downtime.

WHAT VALUE DOES THIS ADD?

Improved Network Planning:

- Optimized Routes: GPS helps in identifying efficient routes, reducing construction costs.
- Future Expansion: Detailed maps aid in planning for future expansion.

WHAT VALUE DOES THIS ADD?

Operational Efficiency:

- Quick Fault Identification: Rapid pinpointing of problems for faster troubleshooting.
- Reduced Service Disruption: Minimized risk of accidental damage during construction by enhancing your location (811) data.

WHAT VALUE DOES THIS ADD?

Regulatory Compliance:

- **Accurate Reporting:** Provides pinpoint data coordinates/attributes for regulatory reporting, ensuring compliance.
- **Easements and Permissions:** Exact data on asset locations helps manage easements and permissions.

WHAT VALUE DOES THIS ADD?

Cost Savings:

- Reduced Labor Costs: Automation reduces the need for manual surveys, lowering costs. Desktop planning/staking.
- Lower Maintenance Costs: Precise asset locations save time and resources for your staff to locate plant.
- Avoidance of Redundancy: Prevents unnecessary duplication of assets.

WHAT VALUE DOES THIS ADD?

Enhanced Customer Satisfaction:

- **Faster Issue Resolution:** Quick identification and repair reduce downtime.
- **Reliable Service:** Improved network reliability enhances customer experience.

WHAT VALUE DOES THIS ADD?

Data Integration:

- GIS Integration: GPS data integrates with GIS for advanced mapping and analysis.
- Integration with Other Systems: Billing/OSS/BSS Systems sharing your GPS data.

GPS RECORDING OF FIBER OPTIC & TELECOM ASSETS BOOSTS OPERATIONAL EFFICIENCY, COST SAVINGS, REGULATORY COMPLIANCE, AND CUSTOMER SATISFACTION, PROVING HIGHLY BENEFICIAL FOR ALL AREAS IN THE LONG RUN.



WHERE TO BEGIN INTEGRATION OF SPATIAL DATA?

Get the experts in the room; talk to a GIS/GPS expert to begin defining your objectives such as:

- What assets do you want to track?
- What details for each asset do you want captured?

DEFINING OBJECTIVES

- What technology or devices are you going to use?
- Important features to consider
- Choose a software platform – integrate with a GIS System



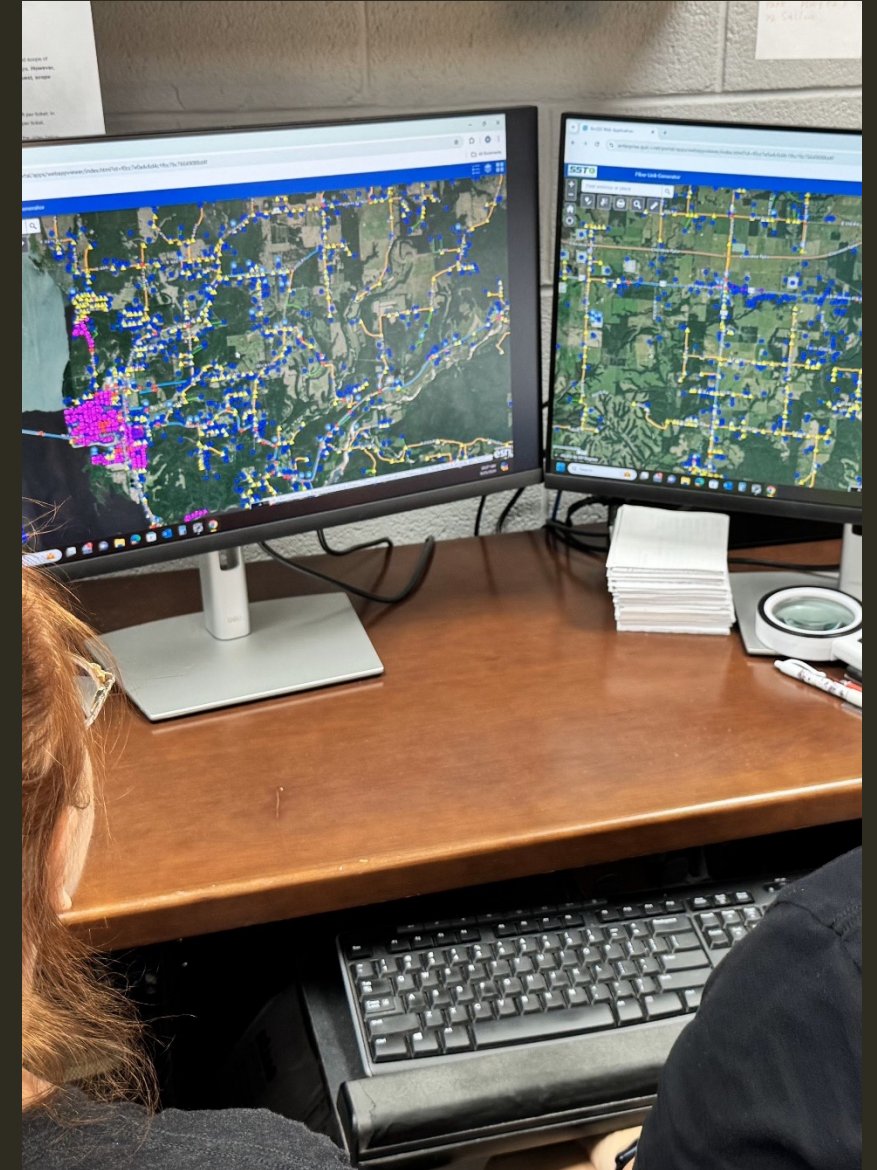
TIME TO COLLECT SOME DATA

1. GET THE GPS IN THE RIGHT EMPLOYEE'S HANDS
2. TRAIN YOUR TEAM ON HOW TO USE GPS EQUIPMENT
3. TRAIN YOUR TEAM ON BEST PRACTICES OF COLLECTION OF COORDINATES AND ATTRIBUTES FOR YOUR ORGANIZATION



OTHER STEPS

1. GET HELP WITH THE PROCESS BY CONSULTING WITH A GPS/GIS CONSULTANT
2. HIRE A GPS CONTRACTOR TO QUICKLY MAP YOUR ENTIRE SYSTEM
3. UTILITIZE A SPECIALIZED UNIT IN YOUR CONSTRUCTION CONTRACTS TO BE DELIVERED ON COMPLETION – BM-GPS



SET UP ALERTS AND REPORTING

1. GEOFENCING
2. OTHER ALERTS
3. REPORTING



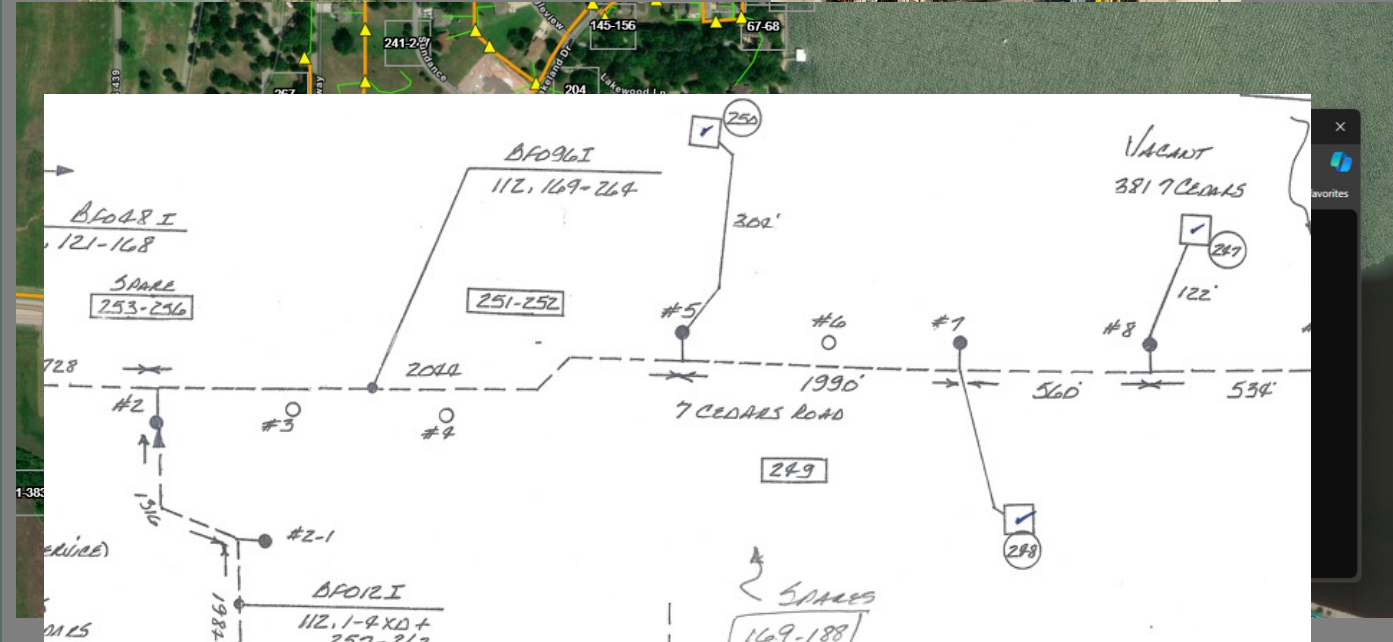
INTEGRATE WITH EXISTING SYSTEMS

1. INVENTORY SYSTEMS
2. BILLING/CUSTOMER SERVICE
3. FLEET MANAGEMENT
4. CONSULTANTS & ENGINEERS
5. FCC BDC - PMM



GIS INTEGRATION WILL ALLOW YOU TO ADD OTHER VALUABLE DATA EITHER AT THE POINT OR IN THE OFFICE

1. PHOTOS
2. EASEMENTS
3. SPLICE DIAGRAMS
4. PLANT NOTES
5. PDF'S



61-72	61	62	63	64	65	66	67	68	69	70	71	72
73-84	73	74	75	76	77	78	79	80	81	82	83	84
85-96	85	86	87	88	89	90	91	92	93	94	95	96

Active

the Town of Davie an easement in and along the easement premises for utility purposes:

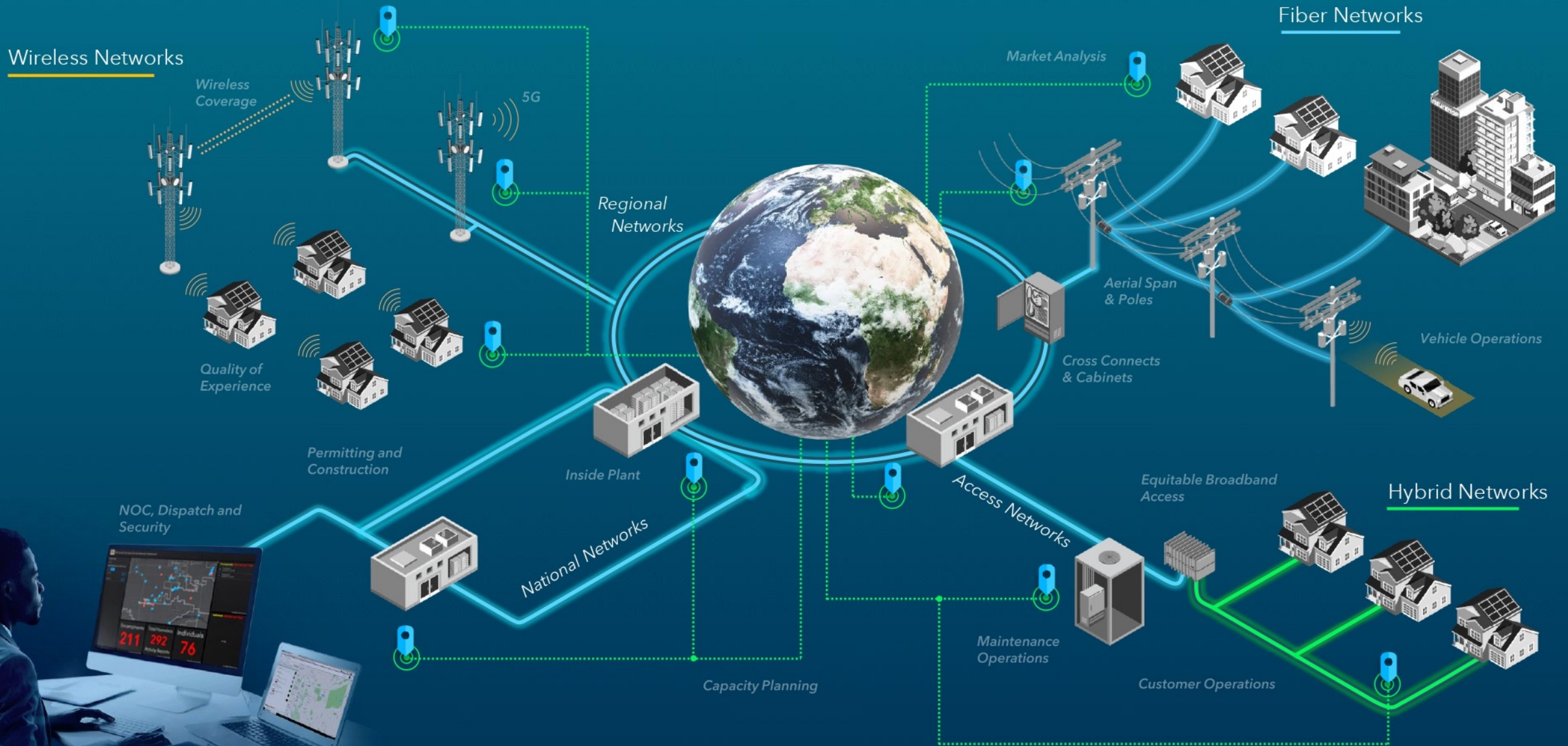
Therefore, in consideration of the foregoing:

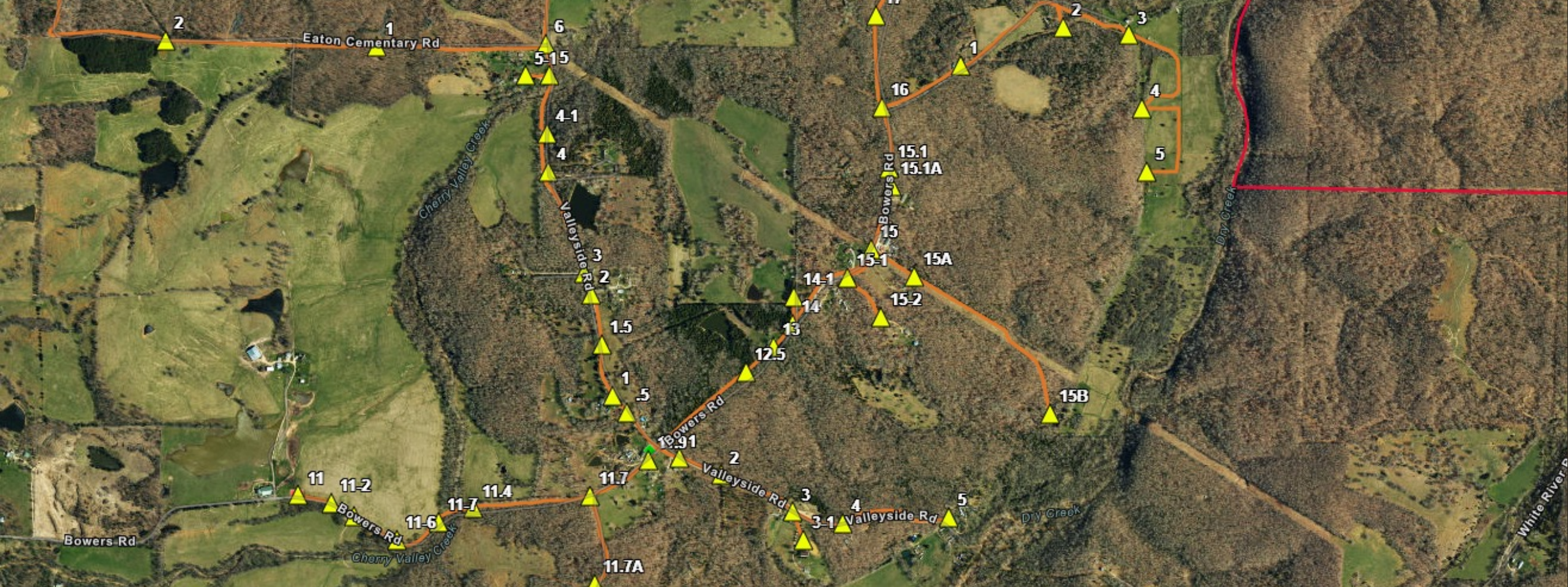
1. The grantors hereby grant and convey to the Town of Davie a perpetual utility easement (which can be over, under and across the easement premises), including the right to ingress and egress to the easement, for construction, reconstruction, alteration, maintenance and repair (to the extent the Town of Davie considers desirable) of pipes and other necessary or desirable appurtenances to and/or for a utility system and/or utility facilities, the easement premises being described as follows which are located in Broward County, Florida:

Exhibit A – easement premises legal description

2. All rights, title and privilege to the easement herein granted shall run with the land and

Everything in Telecom Happens Somewhere





STARTING WITH THESE STEPS WILL HELP YOU
EFFICIENTLY INTEGRATE SPATIAL DATA AND GPS
INTO YOUR COMPANY'S ASSET MANAGEMENT
STRATEGY

Q&A



CONTACT INFO

Scott Overland
iSpeed Technology, LLC
Chief Technical Officer
405-830-1900
Booth #311

iSpeedtechnology.com

